



PRAIRIE PARTNERS: SHORTGRASS PRAIRIE STEWARDSHIP

By Tammy VerCauteren

(The following are outline notes from Ms. VerCauteren's presentation.)

Rocky Mountain Bird Observatory (RMBO) is a non-profit, conservation-based organization. Our mission is the conservation of Rocky Mountain and Great Plains birds and their habitats.

What is Prairie Partners?

Prairie Partners is a program addressing shortgrass prairie conservation issues and declining species by seeking cooperative and voluntary partnerships with landowners and land managers.

The Need for Prairie Partners Private Land Ownership

- Approximately 80 percent of shortgrass prairie.
- Raise awareness for birds through outreach.
- Encourage proactive voluntary efforts.

How We Accomplish Our Mission

- Monitor prairie birds and their habitat.
- Initiate working relationships with landowners and land managers.
- Assist landowners with habitat improvements through partnerships.

*Mountain Plover (*Charadrius montanus*)*

- Monitoring
- Field clearing
- Outreach video

Mountain Plover Conservation

- Program designed to protect nesting plovers.
- Locates nests for farmers prior to plowing.

Workshops

- Hosted by a rancher.
- Wildlife habitat, incentive programs and economic diversification.
- Resource professionals and landowners networking.
- Trying to get people to think outside the box.

Tammy VerCauteren is Director of the Outreach Division of the Rocky Mountain Bird Observatory
1510 S. College Ave., Fort Collins, CO 80524

Prairie Bird Guide

- Targets landowners and resource managers.
- Approximately 80 species.
- Presented by habitats.

- Wetlands.
- Grasslands.
- Shrublands.

Resource Professional Workshops

- Raise awareness of birds with managers.
 - Species ID tips by sight and sound.
 - Bird Survey Protocol.
 - Landscape scale.
- Integrate birds into management and monitoring.
- Multi-state effort.
- More than 70 attendees in 2003.
- CD development for 2004.
- Jay Butler hosting workshop May 19th in Douglas.

CD-ROM to Prairie Birds

- Targets Landowners & Resource Managers.
- 120 species.
- Presented by states.
 - Montana.
 - Wyoming.
 - Colorado.
 - New Mexico.

USFWS-Private Stewardship Grant (PSG)

- New project proposals for PSG Program.
- Stock tank ladders and nest cribs.

Positive Image of Prairie Partners

- Proactive, voluntary efforts of private landowners.
- Simple tools for prairie conservation.
- Encourage healthy human and wildlife communities.
- Building partnerships.

ACKNOWLEDGEMENTS

Prairie Partners is funded by the following: Colorado DOW, Nebraska GPC, NRCS – WHMI, Turner Foundation, Intermountain West JV, CO Farm Bureau, Playa Lakes JV, NE State Wildlife Grant, NE LIP, Texas Parks & Wildlife, Montana Fish, Wildlife & Parks, USFWS-PSGP, Texas Prairie Rivers Region Inc., National Fish and Wildlife Foundation, USFWS, Nebraska Environmental Trust, USDA/SARE, The Nature Conservancy, USFS, Colorado Wildlife Federation.

□

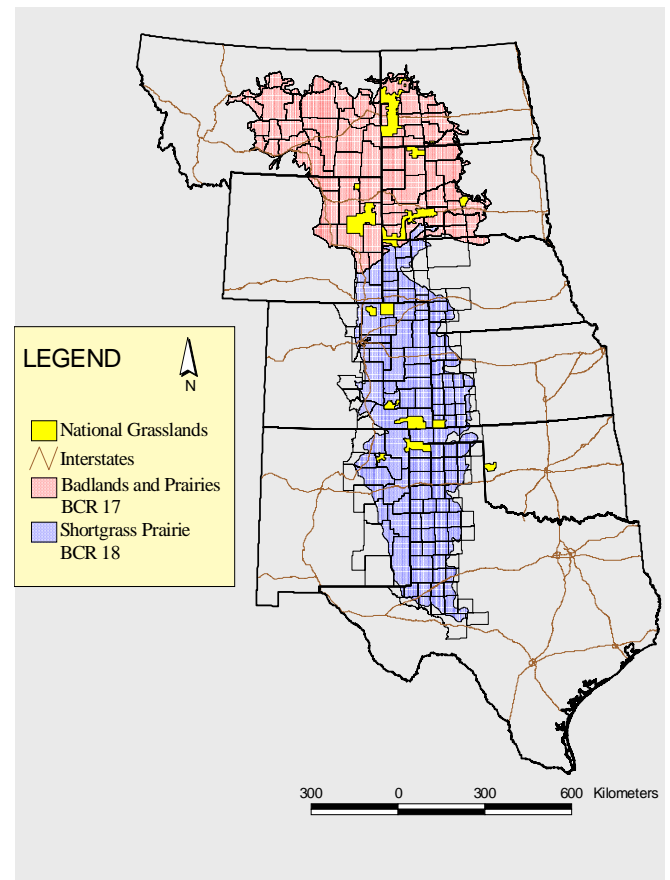


Figure 1. RMBP Prairie Partners working landscape.